

über bar TOOLS™

Innovation in Your hands



WORLD  
CAT|14

# INDEX

▲	The Über Story (Being Über)	3
▲	Pour   Accessories	4
▲	Measure   Test   Squeeze	5
▲	Crush   Stir   Strain   Open	6
▲	Bartender Kits	7
▲	Venue Packs	8
▲	Tool Customisation	9
▲	Bespoke Design	10



# Being Über

*The Über vision is at the heart of who we are and what we do; helping people by designing innovative tools to transform life's mundane and repetitive chores into smiling, YES moments.*

At Über, we believe in hospitality. The people, the industry, the fun are why we do this. Placing modern tools into the hands of today's bartenders, we play our part in making the innovation that everyone involved will enjoy, be inspired by and profit from.

Great hospitality changes people at the deepest level. Customers are inspired by life-affirming service and wonderful spirited drinks. Bartenders are driven by the craft, a connection with the past poured into the present, perfected with personality, prose and panache. Owners line up for their own twist on the latest trends and techniques, knowing that customers and ringing cash registers won't be far behind.

“When dreams are the ladders to ones goals; using the right tools is the first step in the journey!”



## ProFlow™

perfect pour every time

Chrome

- 2 year warranty\*
- 4 second count pour speed
- Completely disassembles for cleaning



\*see www.uberbar tools.com for warranty details  
 Scan for demo  
 Item No: 46/PF001 EAN: 934378600095  
 Inner Ctn Qty: 48 Outer Ctn Qty: 288  
 Dimensions: H92mm x D33mm (H3.78in x D1.3in)  
 Construction: ABS/Food Grade TPE

## ProFlow™

perfect pour every time

Black

- 2 year warranty\*
- 4 second count pour speed
- Completely disassembles for cleaning



\*see www.uberbar tools.com for warranty details  
 Scan for demo  
 Item No: 46/PF006 EAN: 9343786000040  
 Inner Ctn Qty: 48 Outer Ctn Qty: 288  
 Dimensions: H92mm x D33mm (H3.78in x D1.3in)  
 Construction: ABS/Food Grade TPE

## ProFlow™

perfect pour every time

Chrome with Snap-On Protector

- 2 year warranty\*
- 4 second count pour speed
- Completely disassembles for cleaning



\*see www.uberbar tools.com for warranty details  
 Scan for demo  
 Item No: 46/PF001/001 EAN: 9343786001610  
 Inner Ctn Qty: 48 Outer Ctn Qty: 288  
 Dimensions: H92mm x D33mm (H3.78in x D1.3in)  
 Construction: ABS/Food Grade TPE

## ProFlow™

perfect pour every time

Black with Snap-On Protector

- 2 year warranty\*
- 4 second count pour speed
- Completely disassembles for cleaning



\*see www.uberbar tools.com for warranty details  
 Scan for demo  
 Item No: 46/PF006/001 EAN: 9343786001627  
 Inner Ctn Qty: 48 Outer Ctn Qty: 288  
 Dimensions: H92mm x D33mm (H3.78in x D1.3in)  
 Construction: ABS/Food Grade TPE

## ProFlow™

perfect pour every time

Chrome with 30 mL Snap-On

- 2 year warranty\*
- 4 second count pour speed
- Completely disassembles for cleaning
- 30 mL Measure (NMI approved Australia only)



\*see www.uberbar tools.com for warranty details  
 Scan for demo  
 Item No: 46/PFMC30-CHM EAN: 9343786000385  
 Inner Ctn Qty: 48 Outer Ctn Qty: 288  
 Dimensions: H92mm x D33mm (H3.78in x D1.3in)  
 Construction: ABS/Food Grade TPE

## ProFlow™

perfect pour every time

Black with 30 mL Snap-On

- 2 year warranty\*
- 4 second count pour speed
- Completely disassembles for cleaning
- 30 mL Measure (NMI approved Australia only)



\*see www.uberbar tools.com for warranty details  
 Scan for demo  
 Item No: 46/PFMC30-BLK EAN: 9343786000354  
 Inner Ctn Qty: 48 Outer Ctn Qty: 288  
 Dimensions: H92mm x D33mm (H3.78in x D1.3in)  
 Construction: ABS/Food Grade TPE

## BarFlow™

fast fits flawless

Black

- 3 Second count pour speed/with finger flow control
- Refreshable cork fins/replaceable breather tube



Item No: 46/BF006 EAN: 9343786001269  
 Inner Ctn Qty: 48 Outer Ctn Qty: 288  
 Dimensions: H125mm x D33mm (H4.9in x D1.3in)  
 Construction: ABS/Food Grade TPE

## BarFlow™

fast fits flawless

Black with Protector

- 3 Second count pour speed/with finger flow control
- Refreshable cork fins/replaceable breather tube



Item No: 46/BFSM EAN: 9343786001290  
 Inner Ctn Qty: 48 Outer Ctn Qty: 288  
 Dimensions: H127mm x D33mm (H5in x D1.3in)  
 Construction: ABS/Food Grade TPE

## Snap-On Protector

Compatible with ProFlow™ & BarFlow™

- Protects from alcohol evaporation, dust & insects
- Doubles as a 1 Oz measure



Des.Reg.Pat.

Item No: 46/P002-30/C EAN: 9343786001115  
 Inner Ctn Qty: 24 Outer Ctn Qty: 288  
 Dimensions: H63mm x D33mm (H2.5in x D1.3in)  
 Construction: ABS

## Snap-On Dust Cover

Compatible with ProFlow™ Only

- Protects from alcohol evaporation, dust & insects



Des.Reg.Pat.

Item No: 46/PF001 EAN: 9343786000309  
 Inner Ctn Qty: 250 Outer Ctn Qty: 1000  
 Dimensions: H10mm x D33mm (H0.40in x D1.3in)  
 Construction: ABS

## Large Cork

Compatible with ProFlow™ Only

- Fits slightly larger bottle neck openings than the universal cork



Des.Reg.Pat.

Item No: 46/LC EAN: 9343786001030  
 Inner Ctn Qty: 48 Outer Ctn Qty: 576  
 Dimensions: H15mm x D33mm (H0.6in x D1.3in)  
 Construction: ABS/Food Grade TPE

## Extreme Cork

Compatible with ProFlow™ Only

- Fits oversized bottles
- Designed to fit bottles such as Partida™ and other tequila brands with oversized bottle neck openings



Des.Reg.Pat.

Item No: 46/EXC EAN: 9343786000606  
 Inner Ctn Qty: 48 Outer Ctn Qty: 576  
 Dimensions: H40mm x D33mm (H1.6in x D1.3in)  
 Construction: ABS/Food Grade TPE

## Snap-On Measure (30 mL)

Compatible with ProFlow™

- Protects from alcohol evaporation, dust & insects
- Doubles as a 30 mL Measure (NMI approved Australia only)



Des.Reg.Pat.

Item No: 46/P002-30 EAN: 9343786000170  
 Inner Ctn Qty: 24 Outer Ctn Qty: 288  
 Dimensions: H63mm x D33mm (H2.5in x D1.3in)  
 Construction: ABS

## Universal Cork

Compatible with ProFlow™ Only

- Fits a majority of bottle neck openings
- Standard ProFlow™ collar/cork



Des.Reg.Pat.

Item No: 46/UVK EAN: 9343786000668  
 Inner Ctn Qty: 48 Outer Ctn Qty: 576  
 Dimensions: H15mm x D33mm (H0.6in x D1.3in)  
 Construction: ABS/Food Grade TPE

## Extra Large Cork

Compatible with ProFlow™ Only

- Fits larger bottles
- Designed to fit bottles such as Woodford Reserve™, Gentleman Jack™, Pyrat™, Don Julio™ and Patron™



Des.Reg.Pat.

Item No: 46/XL-CORK EAN: 9343786001504  
 Inner Ctn Qty: 48 Outer Ctn Qty: 576  
 Dimensions: H15mm x D33mm (H0.6in x D1.3in)  
 Construction: ABS/Food Grade TPE

## ProJig™

World Version

- Patented flat pour multi volume jigger
- Trilobal shape reduces or eliminates surface lens (meniscus\*)
- Measures up to 12 volume combinations (up to 60 mL)

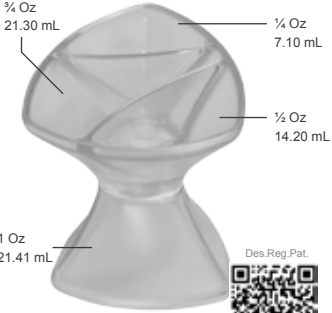


\*Meniscus adds 3-5 mL (0.1-0.17 Oz) of alcohol each serve  
 Scan for demo  
 Item No: 46/PROJIG-04 AU EAN: 9343786000194  
 Inner Ctn Qty: 12 Outer Ctn Qty: 72  
 Dimensions: H78mm x W60mm (H3in x W2.3in)  
 Construction: Polycarbonate

## ProJig™

Canadian Version

- Patented flat pour multi volume jigger
- Trilobal shape reduces or eliminates surface lens (meniscus\*)
- Measures up to 12 volume combinations (up to 2 Oz)

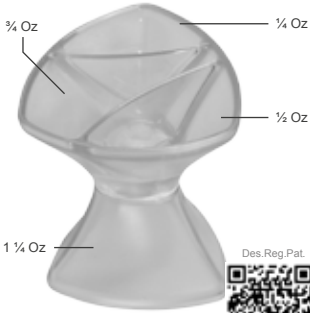


\*Meniscus adds 3-5 mL (0.1-0.17 Oz) of alcohol each serve  
 Scan for demo  
 Item No:46/PROJIG-04 CAN EAN: 9343786000217  
 Inner Ctn Qty: 12 Outer Ctn Qty: 72  
 Dimensions: H78mm x W60mm (H3in x W2.3in)  
 Construction: Polycarbonate

## ProJig™

US Version

- Patented flat pour jigger
- Trilobal shape reduces or eliminates surface lens (meniscus\*)
- Measures up to 12 volume combinations (up to 2½ Oz)



\*Meniscus adds 3-5 mL (0.1-0.17 Oz) of alcohol each serve  
 Scan for demo  
 Item No: 46/PROJIG-04 US EAN: 9343786000057  
 Inner Ctn Qty: 12 Outer Ctn Qty: 72  
 Dimensions: H78mm x W60mm (H3in x W2.3in)  
 Construction: Polycarbonate

## ProBarJig™

World Version

- Patented flat pour dual volume jigger
- Trilobal shape reduces or eliminates surface lens (meniscus\*)
- Angled jigger head provides clean directed pour streams



\*Meniscus adds 3-5 mL (0.1-0.17 Oz) of alcohol each serve  
 Scan for demo  
 Item No: 46/PROBARJIG-04 AU EAN: 93437860004153  
 Inner Ctn Qty: 12 Outer Ctn Qty: 72  
 Dimensions:H53mm x W68mm (H3.1in x W2.8in)  
 Construction: Polycarbonate

## ProBarJig™

Canadian Version

- Patented flat pour dual volume jigger
- Trilobal shape reduces or eliminates surface lens (meniscus\*)
- Angled jigger head provides clean directed pour streams



\*Meniscus adds 3-5 mL (0.1-0.17 Oz) of alcohol each serve  
 Scan for demo  
 Item No: 46/PROBARJIG-04 US EAN: 9343786000422  
 Inner Ctn Qty: 12 Outer Ctn Qty: 72  
 Dimensions: H53mm x W68mm (H3.1in x W2.8in)  
 Construction: Polycarbonate

## ProBarJig™

US Version

- Patented flat pour dual volume jigger
- Trilobal shape reduces or eliminates surface lens (meniscus\*)
- Angled jigger head provides clean directed pour streams



\*Meniscus adds 3-5 mL (0.1-0.17 Oz) of alcohol each serve  
 Scan for demo  
 Item No: 46/PROBARJIG-04 US EAN: 9343786000422  
 Inner Ctn Qty: 12 Outer Ctn Qty: 72  
 Dimensions: H53mm x W68mm (H3.1in x W2.8in)  
 Construction: Polycarbonate

## ProBarIBone™

World Version

- World's tallest multi volume cocktail jigger
- Trilobal shape reduces or eliminates surface lens (meniscus\*)
- Measures up to 12 volume combinations (up to 60 mL)



\*Meniscus adds 3-5 mL (0.1-0.17 Oz) of alcohol each serve  
 Scan for demo  
 Item No: 46/BARBONE-CHM WORLD EAN: 9343786000637  
 Inner Ctn Qty: 48 Outer Ctn Qty: 144  
 Dimensions: H147mm x W60mm (H5.8in x 2.3in)  
 Construction: Polycarbonate

## ProBarIBone™

CAN Version

- World's tallest multi volume cocktail jigger
- Trilobal shape reduces or eliminates surface lens (meniscus\*)
- Measures up to 12 volume combinations (up to 2 Oz)



\*Meniscus adds 3-5 mL (0.1-0.17 Oz) of alcohol each serve  
 Scan for demo  
 Item No: 46/BARBONE-CHM CAN EAN: 9343786000651  
 Inner Ctn Qty: 48 Outer Ctn Qty: 144  
 Dimensions: H147mm x W60mm (H5.8in x 2.3in)  
 Construction: Polycarbonate

## ProBarIBone™

US Version

- World's tallest multi volume cocktail jigger
- Trilobal shape reduces or eliminates surface lens (meniscus\*)
- Measures up to 12 volume combinations (up to 2½ Oz)



\*Meniscus adds 3-5 mL (0.1-0.17 Oz) of alcohol each serve  
 Scan for demo  
 Item No: 46/BARBONE-CHM US EAN: 9343786000644  
 Inner Ctn Qty: 48 Outer Ctn Qty: 144  
 Dimensions: H147mm x W60mm (H5.8in x 2.3in)  
 Construction: Polycarbonate

## ProCheck™

the pour test kit

- Designed to improve bartender accuracy/consistency, single/dual handed testing
- Dual Metric/US Oz calibrations
- Large pour-in cavities eliminates the need for pour funnels



Item No: 46/PCHK EAN: 9343786000033  
 Inner Ctn Qty: 1 Outer Ctn Qty: 2  
 Dimensions: L279mm x W127mm (L11.5in x W5in)  
 Construction: Stainless steel/Polycarbonate

## C-Press™

citrus squeezer

- Suitable for limes and lemons
- Reinforced pivot points for increased durability/strength



Item No: 46/CPRESS EAN: 9343786001207  
 Inner Ctn Qty: 4 Outer Ctn Qty: 24  
 Dimensions: L226mm x W43mm (L8.9in x W1.7in)  
 Construction: Aluminium



Uberbar Tools™  
 Innovation in Your hands

## ProCrush™

muddler and crusher

- ProGrip™ handle provides power & stability
- Extract more oils and juices from fruits/herbs
- Can be used as an ice crusher when inverted
- Replaceable silicon head



Each ProCrush™ is uniquely hand crafted and as such slight variations in finish will be apparent from one piece to another. This is an important aesthetic of this tool.



Item No: 46/PCRUSH EAN: 9343786000132  
 Inner Ctn Qty: 1 Outer Ctn Qty: 24  
 Dimensions: L320mm x D44mm (L12.9in x D1.7in)  
 Construction: Cast stainless steel/ABS/TPE

## ProStik™

all purpose muddler

- Extract more oils and juices from fruits/herbs
- Replaceable silicon head eliminates muddling vacuum formation



Item No: 46/PSTIK EAN: 9343786000477  
 Inner Ctn Qty: 6 Outer Ctn Qty: 48  
 Dimensions: L294mm x D43mm (L11.6 x D1.7in)  
 Construction: Formed stainless steel/ABS/TPE

## Replaceable Head

Compatible with ProCrush™/ProStik™

- Extract more oils and juices from fruits/herbs
- Compatible with the ProCrush™ and ProStik™



Item No: 46/PCRUSH-HD EAN: 9343786001634  
 Inner Ctn Qty: 1 Outer Ctn Qty: 50  
 Dimensions: D43mm x H43mm (H1.7in x W1.7in)  
 Construction: ABS/TPE

## ProStirrer™

stirring, muddling, layering

- Reinforced spoon head and weighted base
- Can be used for muddling, layering and reducing champagne bubbles
- Hand twisted stainless steel



Item No: 46/PRSTR EAN: 9343786001146  
 Inner Ctn Qty: 12 Outer Ctn Qty: 144  
 Dimensions: L300mm x D22mm (L11.6in x D0.9in)  
 Construction: Stainless steel

## ProTrident™

stirring, layering, garnishing

- Reinforced spoon head and fork head
- Can be used for stirring, layering and garnishing
- Hand twisted stainless steel



Item No: 46/TRIDENT EAN: 9343786001078  
 Inner Ctn Qty: 12 Outer Ctn Qty: 144  
 Dimensions: L300mm x D7mm (L11.6in x D0.9in)  
 Construction: Stainless steel

## ProTrident™ XL

stirring, layering, garnishing

- Reinforced spoon head and fork head
- Can be used for stirring, layering and garnishing
- Hand twisted stainless steel shaft resists bending



Item No: 46/BFSM EAN: 9343786001399  
 Inner Ctn Qty: 12 Outer Ctn Qty: 144  
 Dimensions: L500mm x D7mm (L19.6in x D0.9in)  
 Construction: Stainless steel

## ProTeardrop™

stirring & mixing

- Reinforced spoon head and tear drop head
- Can be used for mixing and stirring
- Hand twisted stainless steel shaft resists bending



Item No:46/P002-30/C EAN: 9343786001450  
 Inner Ctn Qty: 12 Outer Ctn Qty: 144  
 Dimensions: L300mm x D7mm (L11.6in x D0.9in)  
 Construction: Stainless steel

## ProTeardrop™ XL

stirring & mixing

- Reinforced spoon head and tear drop head
- Can be used for mixing and stirring
- Hand twisted stainless steel shaft resists bending



Item No:46/P002-30 EAN: 9343786001429  
 Inner Ctn Qty: 12 Outer Ctn Qty: 144  
 Dimensions: L500mm x D7mm (L19.6in x D0.9in)  
 Construction: Stainless steel

## StrainRay™

sting-free straining

- Unique finger rest for controlling liquid flow
- Tight spring coils catches all drink residue
- Balances well on a Boston tin or glass



Item No: 46/SRAY EAN: 9343786000064  
 Inner Ctn Qty: 6 Outer Ctn Qty: 24  
 Dimensions: L200mm x H25mm (L7.9in x H1in)  
 Construction: Stainless steel

## Julie™

dual purpose strainer

- Trilobal shape eases ice scooping
- More perforations to release water
- Can be used as a double strainer



Item No: 46/JULEP EAN: 9343786000514  
 Inner Ctn Qty: 6 Outer Ctn Qty: 48  
 Dimensions: L165mm x H15mm (L6.5in x H0.6in)  
 Construction: Stainless steel

## ProSep™

egg seperator

- Suits all egg yolk sizes
- Wire construction will not pull through egg yolk
- Constructed from stainless steel



Item No: 46/PSEP EAN: 9343786001085  
 Inner Ctn Qty: 6 Outer Ctn Qty: 144  
 Dimensions: L142mm x H25mm (L5.6in x H1in)  
 Construction: Stainless steel

## EndoBlade™

the cutting edge blade

- Revolutionary curved design for ease of use
- Tapered blade front to ease the opening of ring-pull cans
- Spinner-ring finger protector



Item No: 46/ENDOBLADE EAN: 9343786001221  
 Inner Ctn Qty: 12 Outer Ctn Qty: 96  
 Dimensions: L226mm x H43mm (L8.9in x H1.7in)  
 Construction: Stainless steel



# ProBostonRoll™

the total bartender kit

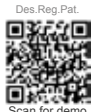
World Version

- ▲ Essential set of bar tools in a convenient water-resistant roll case
- ▲ Heavy duty shoulder strap
- ▲ PVC carry case

- Shoulder Strap 46/X-010
- ProStirrer™ 46/PRSTR
- ProStik™ 46/PSTIK
- Barblade 46/X-004
- Double Strainer (In tin) 46/X-000
- ProJig™ 46/PROJIG-04 AU
- Stainless Steel Knife 46/X-009
- Chrome ProFlow™ (2 Pcs) 46/PF001
- Deco Waiter's Friend 46/X-014
- Lemon Zester/Channel Knife 46/X-001
- Peeler 46/X-002
- StrainRay 46/SRAY
- Tweezer 46/X-003
- Boston Tin & Glass 46/X-005 46/X-006
- C-Press™ 46/CPRESS
- Juliep™ 46/JULEP



Item No: 46/BBR-01 EAN: 9343786000972  
 Inner Ctn Qty: 2 Outer Ctn Qty: 4  
 Dimensions :L355mm x D170mm (L17in x D6.7in)  
 Construction: PVC/SS/ABS/Silicon/Aluminium



# ProBostonRoll™

the total bartender kit

CAN Version

- ▲ Essential set of bar tools in a convenient water-resistant roll case
- ▲ Heavy duty shoulder strap
- ▲ PVC carry case

- Shoulder Strap 46/X-010
- ProStirrer™ 46/PRSTR
- ProStik™ 46/PSTIK
- Barblade 46/X-004
- Double Strainer (In tin) 46/X-000
- ProJig™ 46/PROJIG-04 CAN
- Stainless Steel Knife 46/X-009
- Chrome ProFlow™ (2 Pcs) 46/PF001
- Deco Waiter's Friend 46/X-014
- Lemon Zester/Channel Knife 46/X-001
- Peeler 46/X-002
- StrainRay 46/SRAY
- Tweezer 46/X-003
- Boston Tin & Glass 46/X-005 46/X-006
- C-Press™ 46/CPRESS
- Juliep™ 46/JULEP



Item No: 46/BBR-03 EAN: 9343786000705  
 Inner Ctn Qty: 2 Outer Ctn Qty: 4  
 Dimensions :L355mm x D170mm (L17in x D6.7in)  
 Construction: PVC/SS/ABS/Silicon/Aluminium



# ProBostonRoll™

the total bartender kit

US Version

- ▲ Essential set of bar tools in a convenient water-resistant roll case
- ▲ Heavy duty shoulder strap
- ▲ PVC carry case

- Shoulder Strap 46/X-010
- ProStirrer™ 46/PRSTR
- ProStik™ 46/PSTIK
- Barblade 46/X-004
- Double Strainer (In tin) 46/X-000
- ProJig™ 46/PROJIG-04 US
- Stainless Steel Knife 46/X-009
- Chrome ProFlow™ (2 Pcs) 46/PF001
- Deco Waiter's Friend 46/X-014
- Lemon Zester/Channel Knife 46/X-001
- Peeler 46/X-002
- StrainRay 46/SRAY
- Tweezer 46/X-003
- Boston Tin & Glass 46/X-005 46/X-006
- C-Press™ 46/CPRESS
- Juliep™ 46/JULEP



Item No: 46/BBR-02 EAN: 9343786000965  
 Inner Ctn Qty: 2 Outer Ctn Qty: 4  
 Dimensions :L355mm x D170mm (L17in x D6.7in)  
 Construction: PVC/SS/ABS/Silicon/Aluminium



# ProBostonRoll™DL

the total bartender kit

World Version

- ▲ Essential set of bar tools in a convenient water-resistant roll case
- ▲ Heavy duty shoulder strap
- ▲ PVC carry case

- Shoulder Strap 46/X-010
- ProStirrer™ 46/PRSTR
- ProCrush™ 46/PSTIK
- EndoBlade™ 46/ENDOBLADE
- Double Strainer (In tin) 46/X-000
- ProJig™ 46/PROJIG-04 AU
- Stainless Steel Knife 46/X-009
- Chrome ProFlow™ (2 Pcs) 46/PF001
- Deco Waiter's Friend 46/X-014
- Lemon Zester/Channel Knife 46/X-001
- Peeler 46/X-002
- StrainRay 46/SRAY
- Tweezer 46/X-003
- Boston Tin & Glass 46/X-005 46/X-006
- C-Press™ 46/CPRESS
- Juliep™ 46/JULEP



Item No: 46/BBR-P01 EAN: 9343786000972  
 Inner Ctn Qty: 2 Outer Ctn Qty: 4  
 Dimensions :L355mm x D170mm (L17in x D6.7in)  
 Construction: PVC/SS/ABS/Silicon/Aluminium



# ProBostonRoll™DL

the total bartender kit

CAN Version

- ▲ Essential set of bar tools in a convenient water-resistant roll case
- ▲ Heavy duty shoulder strap
- ▲ PVC carry case

- Shoulder Strap 46/X-010
- ProStirrer™ 46/PRSTR
- ProCrush™ 46/PSTIK
- EndoBlade™ 46/ENDOBLADE
- Double Strainer (In tin) 46/X-000
- ProJig™ 46/PROJIG-04 CAN
- Stainless Steel Knife 46/X-009
- Chrome ProFlow™ (2 Pcs) 46/PF001
- Deco Waiter's Friend 46/X-014
- Lemon Zester/Channel Knife 46/X-001
- Peeler 46/X-002
- StrainRay 46/SRAY
- Tweezer 46/X-003
- Boston Tin & Glass 46/X-005 46/X-006
- C-Press™ 46/CPRESS
- Juliep™ 46/JULEP



Item No: 46/BBR-P03 EAN: 9343786000705  
 Inner Ctn Qty: 2 Outer Ctn Qty: 4  
 Dimensions :L355mm x D170mm (L17in x D6.7in)  
 Construction: PVC/SS/ABS/Silicon/Aluminium



# ProBostonRoll™DL

the total bartender kit

US Version

- ▲ Essential set of bar tools in a convenient water-resistant roll case
- ▲ Heavy duty shoulder strap
- ▲ PVC carry case

- Shoulder Strap 46/X-010
- ProStirrer™ 46/PRSTR
- ProCrush™ 46/PCRUSH
- EndoBlade™ 46/ENDOBLADE
- Double Strainer (In tin) 46/X-000
- ProJig™ 46/PROJIG-04 US
- Stainless Steel Knife 46/X-009
- Chrome ProFlow™ (2 Pcs) 46/PF001
- Deco Waiter's Friend 46/X-014
- Lemon Zester/Channel Knife 46/X-001
- Peeler 46/X-002
- StrainRay 46/SRAY
- Tweezer 46/X-003
- Boston Tin & Glass 46/X-005 46/X-006
- C-Press™ 46/CPRESS
- Juliep™ 46/JULEP



Item No: 46/BBR-P02 US EAN: 9343786000965  
 Inner Ctn Qty: 2 Outer Ctn Qty: 4  
 Dimensions :L355mm x D170mm (L17in x D6.7in)  
 Construction: PVC/SS/ABS/Silicon/Aluminium

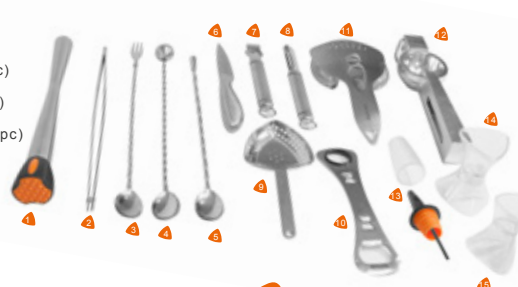


# ProBarStart™

World Version

▲ The BarStart™ Set forms an integral part of your back bar and cocktail list, allowing you to craft memorable, consistent and profitably made cocktails every time.

- 1 ProStik™ (1pc)  
46/PSTIK
- 2 Tweezer (1pc)  
46/X-003
- 3 ProTrident™ (1pc)  
46/TRIDENT
- 4 ProStirrer™ (1pc)  
46/PRSTR
- 5 ProTeardrop™ (1pc)  
46/TEARDROP
- 6 Knife (1pc)  
46/X-009
- 7 Zester (1pc)  
46/X-001
- 8 Peeler (1pc)  
46/X-002
- 9 Juliep™ (1pc)  
46/JULEP
- 10 EndoBlade™ (1pc)  
46/ENDOBLADE
- 11 StrainRay™ (1pc)  
46/SRAY
- 12 C-Press™ (1pc)  
46/CPRESS
- 13 BarFlow™ (48pcs)/Snap-On (48pcs)  
46/BFSM
- 14 ProBarJig™ (2pcs)  
46/PROBARJIG-04 AU
- 15 ProJig™ (2pcs)  
46/PROJIG-04 AU



122 Piece Set



Scan for demo

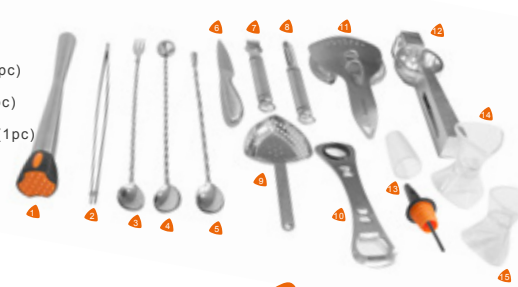
Item No: 46/BPS-WORLD EAN: 9343786001771  
 Inner Ctn Qty: 1 Outer Ctn Qty: 6  
 Dimensions: L210mm x W300mm (L8in x W12in)  
 Construction: Stainless steel/ABS/Silicon/Aluminium

# ProBarStart™

CAN Version

▲ The BarStart™ Set forms an integral part of your back bar and cocktail list, allowing you to craft memorable, consistent and profitably made cocktails every time.

- 1 ProStik™ (1pc)  
46/PSTIK
- 2 Tweezer (1pc)  
46/X-003
- 3 ProTrident™ (1pc)  
46/TRIDENT
- 4 ProStirrer™ (1pc)  
46/PRSTR
- 5 ProTeardrop™ (1pc)  
46/TEARDROP
- 6 Knife (1pc)  
46/X-009
- 7 Zester (1pc)  
46/X-001
- 8 Peeler (1pc)  
46/X-002
- 9 Juliep™ (1pc)  
46/JULEP
- 10 EndoBlade™ (1pc)  
46/ENDOBLADE
- 11 StrainRay™ (1pc)  
46/SRAY
- 12 C-Press™ (1pc)  
46/CPRESS
- 13 BarFlow™ (48pcs)/Snap-On (48pcs)  
46/BFSM
- 14 ProBarJig™ (2pcs)  
46/PROBARJIG-04 CAN
- 15 ProJig™ (2pcs)  
46/PROJIG-04 CAN



122 Piece Set



Scan for demo

Item No: 46/BPS-CAN EAN: 9343786001788  
 Inner Ctn Qty: 1 Outer Ctn Qty: 6  
 Dimensions: L210mm x W300mm (L8in x W12in)  
 Construction: Stainless steel/ABS/Silicon/Aluminium

# ProBarStart™

US Version

▲ The BarStart™ Set forms an integral part of your back bar and cocktail list, allowing you to craft memorable, consistent and profitably made cocktails every time.

- 1 ProStik™ (1pc)  
46/PSTIK
- 2 Tweezer (1pc)  
46/X-003
- 3 ProTrident™ (1pc)  
46/TRIDENT
- 4 ProStirrer™ (1pc)  
46/PRSTR
- 5 ProTeardrop™ (1pc)  
46/TEARDROP
- 6 Knife (1pc)  
46/X-009
- 7 Zester (1pc)  
46/X-001
- 8 Peeler (1pc)  
46/X-002
- 9 Juliep™ (1pc)  
46/JULEP
- 10 EndoBlade™ (1pc)  
46/ENDOBLADE
- 11 StrainRay™ (1pc)  
46/SRAY
- 12 C-Press™ (1pc)  
46/CPRESS
- 13 BarFlow™ (48pcs)/Snap-On (48pcs)  
46/BFSM
- 14 ProBarJig™ (2pcs)  
46/PROBARJIG-04 US
- 15 ProJig™ (2pcs)  
46/PROJIG-04 US



122 Piece Set



Scan for demo

Item No: 46/BPS-US EAN: 9343786001559  
 Inner Ctn Qty: 1 Outer Ctn Qty: 6  
 Dimensions: L210mm x W300mm (L8in x W12in)  
 Construction: Stainless steel/ABS/Silicon/Aluminium

# Essential Tools™

▲ The Essential Tools™ Set consist of 4 essential bar tools to craft memorable cocktails every time.

- 1 StrainRay™ (1pc)  
46/SRAY
- 2 ProStik™ (1pc)  
46/PSTIK
- 3 C-Press™ (1pc)  
46/CPRESS
- 4 ProStirrer™ (1pc)  
46/PRSTR



4 Piece Set



Scan for demo

Item No: 46/ETOOLS-C1 EAN: 934378001795  
 Inner Ctn Qty: 1 Outer Ctn Qty: 12  
 Dimensions: L210mm x W300mm (L8in x W12in)  
 Construction: Stainless steel/ABS/Silicon/Aluminium



Uberbar Tools™  
 Innovation in Your hands



# Create your own custom look

Über's ability to create branded point of sale solutions is legendary. Designing emotionally engaging tools to help you connect with your audience or community is where we excel! Whether logoing/ packaging existing Über tools or creating sizzling bespoke solutions to resonate and delight, we're here to help! Dealing with Über is the turn-key solution, delivered direct to your door, on time, within budget, without fuss.

Drop us an email at [sales@uberbartools.com](mailto:sales@uberbartools.com) to enquire about our tools customisation service.



# Bespoke Design

Über design gives brand owners a chance to leverage our design and manufacturing capabilities to deliver real impact at the point of sale.

Quality tools extend your brand's premium messaging beyond the bottle, providing brand ambassadors and sales staff with incentives that will make the difference when it comes to signing new accounts and rewarding existing ones.

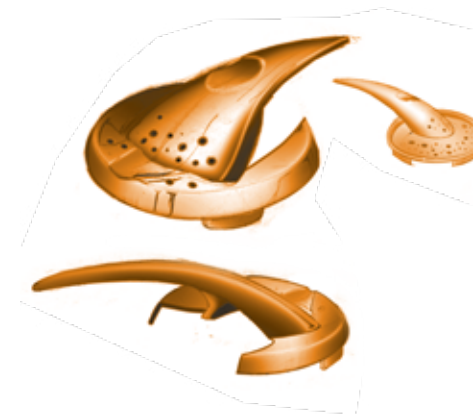
Resonating design is based on innate understanding.

We collaborate daily with bars, restaurants, liquor and duty free outlets seeking to create memorable and valuable branded experiences for their guests and customers.

Inspired by these partnerships we translate passion, vision and operational imperatives into meaningful and relevant design.

If you're looking to bring something truly bespoke to market, our fast design and prototyping processes will ensure your brand stands out from the rest, with flexible manufacturing and distribution that grow with you. Our design solution puts tools in the hands of people who matter, all over the world, on-time and in-budget.

Get in touch with your challenge today.





Available from your preferred hospitality goods supplier,  
or for a list of distributors contact:



**WORLD HQ**  
Unit 12U 175  
Gibbes Street  
Chatswood NSW,  
AUSTRALIA 2067  
T +61 2 9417 6977  
F +61 2 9417 6155  
E sales@uberbartools.com  
W www.uberbartools.com