

BOTTOM SEALS

BR 3506

/ versatile brush strip for use in a variety of draft-proofing applications

TECHNICAL DATA

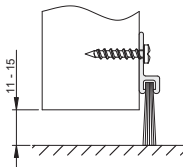
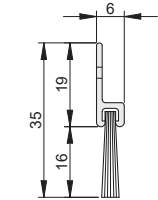
Brush material	PP
Carrier material	aluminum, anodized
<b>DIMENSIONS</b>	
Width x height	6 x 35 mm
Bottom gap size	11 - 15 mm
Standard lengths	1.000, 2.100, 2.400, 3.000 mm
Maximum lengths	3.000 mm
Can be shortened by	any length

FIXING

Fixing	surface mounted to the face of the door, screw fixed
--------	--

PERFORMANCE & CERTIFICATES

UL	UL 10C (R38166)
----	-----------------



athmer



Athmer South Asia Pvt. Ltd.

sa@athmer.com  
www.athmer.com



Door sealing solutions

BS 4006 S

- / versatile fin seal in a slim design
- / suitable for medium temperature smoke, draught, dust, and weather protection
- / covering gaps up to 20mm
- / with elongated fixing holes for easy positioning and adjustment
- / fixing screws concealed by snap on cover

TECHNICAL DATA

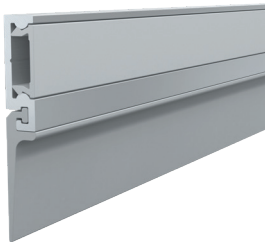
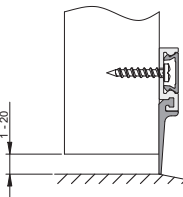
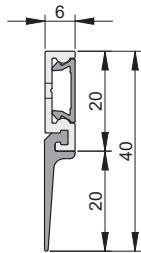
Gasket material	self-extinguishing silicone
Carrier material	aluminum, anodized
<b>DIMENSIONS</b>	
Width x height	6 x 40 mm
Bottom gap size	1 - 20 mm
Standard lengths	1.000, 2.100, 2.250, 2.500, 3.000 mm
Maximum lengths	3.000 mm
Can be shortened by	any length

FIXING

Fixing	surface mounted to the face of the door, screw fixed
--------	--

PERFORMANCE & CERTIFICATES

UL	UL 10C (R38166)
----	-----------------



athmer

Door sealing solutions



Door sealing solutions



athmer

## DROP SEALS

### Schall-Ex® L-15/30 EK

- / parallel drop minimises friction with the floor
- / tool-free actuator can be deactivated before building occupancy
- / actuator requires no protective press plate for the frame
- / end plates provide neat finish

#### TECHNICAL DATA

Gasket material self-extinguishing silicone

#### DIMENSIONS

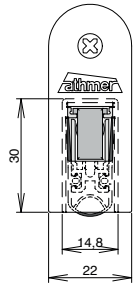
Width x height 14,8 x 30 mm  
Standard lengths 708, 833, 958, 1083, 1208 mm  
Minimum lengths 235 mm  
Maximum lengths 2000 mm  
Can be shortened by 125 mm from standard lengths  
Travel 20 mm

#### FIXING

Fixing rebated into a groove in the door, screw fixed either side

#### PERFORMANCE & CERTIFICATES

Fire EN 1634-1  
Acoustic 52dB over 7mm gap, 51dB over 12mm gap



### Wind-Ex S

- / self-levelling mechanism
- / removable actuator deactivates automatic function during the construction phase
- / seal can be easily adjusted by hand

#### TECHNICAL DATA

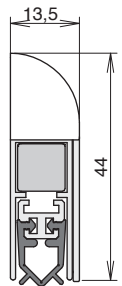
Gasket material self-extinguishing silicone

#### DIMENSIONS

Width x height 13,5 x 44 mm  
Standard lengths 735, 860, 985, 1110 mm  
Minimum lengths 235 mm  
Maximum lengths 1330 mm  
Can be shortened by 125 mm  
Travel 11 mm

#### FIXING

Fixing surface mounted to the face of the door, screw fixed



athmer

Door sealing solutions

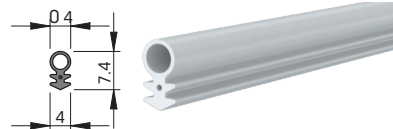
## PERIMETER SEALS

Our range of perimeter seals has been curated to offer solutions for a **wide range of gap sizes, fixing locations and applications**. This includes rebated, self-adhesive and surface-mounted options for both door stops and frame reveals. Their main purpose is to provide an effective **barrier against sound** transfer between the door and door frame, as well as **smoke, air, light, dirt, dust** and **odours**.

### PS 0402 S

#### TECHNICAL DATA

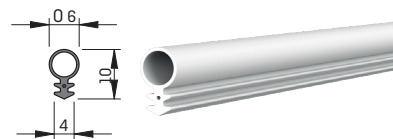
Gasket material self-extinguishing silicone  
Packaging 100 m  
Colors black, brown, white



### PS 0604 S

#### TECHNICAL DATA

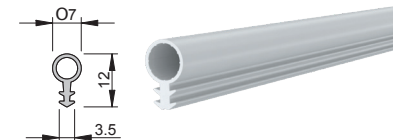
Gasket material self-extinguishing silicone  
Packaging 100 m  
Colors black, brown, white



### PS 0704 TE

#### TECHNICAL DATA

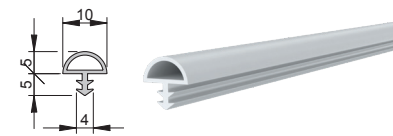
Gasket material TPE  
Packaging 250 m  
Colors black, brown, white



### PS 1004 TE

#### TECHNICAL DATA

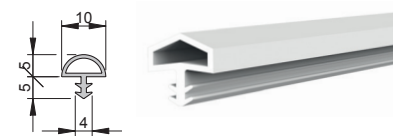
Gasket material TPE  
Packaging 250 m  
Colors black, brown, white



### PS 1005 TE

#### TECHNICAL DATA

Gasket material TPE  
Packaging 250 m  
Colors black, brown, white



athmer

Door sealing solutions

## PERIMETER SEALS

Our range of perimeter seals has been curated to offer solutions for a **wide range of gap sizes, fixing locations and applications**. This includes rebated, self-adhesive and surface-mounted options for both door stops and frame reveals. Their main purpose is to provide an effective **barrier against sound** transfer between the door and door frame, as well as **smoke, air, light, dirt, dust** and **odours**.

### Schall-Ex® AP 1018 S/TE

#### TECHNICAL DATA

Gasket material self-extinguishing silicone/TPE  
Packaging 25 m, 100 m  
Colors black, brown, white, beige



### PS 788 S

#### TECHNICAL DATA

Gasket material self-extinguishing silicone/TPE  
Packaging 50 m  
Colors black, brown, white, grey



### PS 1010 P Flex

#### TECHNICAL DATA

Gasket material PVC  
Packaging 2.4 m  
Colors black, dark brown, white, grey  
Certification UL 10C (R38166)



### PS 1212 P Flex

#### TECHNICAL DATA

Gasket material PVC  
Packaging 2.4 m  
Colors black, dark brown, white, grey  
Certification UL 10C (R38166)



### PS 810 TE

#### TECHNICAL DATA

Gasket material TPE  
Packaging 200 m  
Colors black, dark brown, grey

