

EHO Electromagnetic Hold-Open



This Electromagnetic Hold-Open device (EHO) allows for barrier-free access at single and double leaf fire doors. Doors will be held open under normal circumstances to ensure free flow of traffic, yet close securely in case of a fire or power failure.

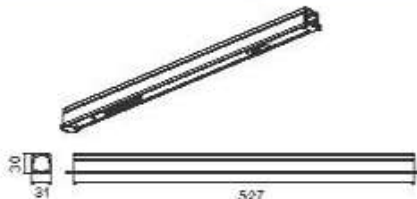
Certificate:
1121-CPR-AE5020



Product Features:

	24V	48V
Hold-open angle	80°-120°	80°-120°
Adjustable release force	25Nm-78Nm	25Nm-78Nm
Input voltage	110-240VAC	110-240VAC
Operating voltage	24 VDC ± 15%	48 VDC ± 15%
Power input	1.4W	1.4W
Rated for continuous duty	100% ED	100% ED
EN 1155	V	V
D.A.S. NFS 61-937-1	V	V

Options

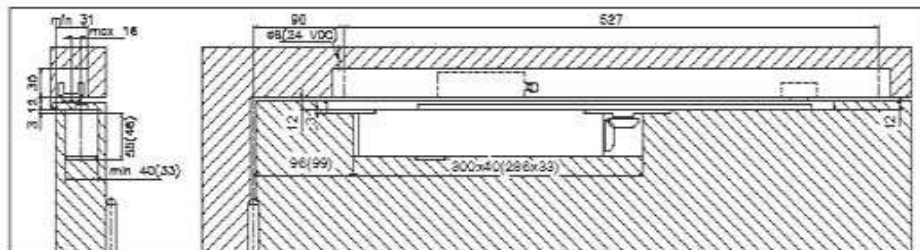


ZHT96-D002

- Electromagnetic Hold-Open device (EHO)
- With track arm: ZAA-D145 and rail: ZHAA-D002
- EN Certified

Installation:

Concealed mount T96M EN3-6 (T96G EN2-4)



Exclusively for:



HARLE
PHILIPPINES
An ISO 9001:2015 Certified Company



Unit 408 SEDCCO Building, Rada corner Legazpi Sts.
Legazpi Village, Makati City, Philippines
Tel. No. 8892-8989 / 8553-8988 Fax No. 8892-1688
Website: www.harlephils.com E-Mail: sales@harlephils.com