



**FOR AN EFFICIENT
HANDS DISINFECTION!**

**INTEGRATED
DISPLAY AREA**
High visibility
(A5 format)

NON-CAPTIVE
Suitable for all
types of hand
sanitizer gel

ANTI-VANDALISM
Stand-a-alone stable system
(provision for base bolting)

SECURE
Lock with a key

HYGIENIC
Automatic hand detection
with residual collector

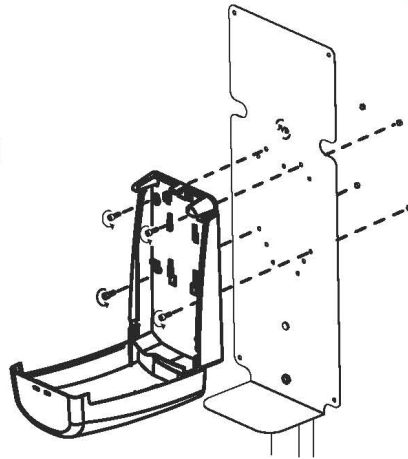
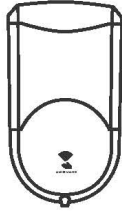
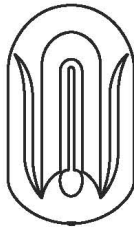
**NO ELECTRICAL
INSTALLATION**
The hand sanitizing
station runs on batteries

SPECIFICATIONS

- Integrated sanitizer station
- High visibility notification panel
- Notification secured with magnetic acrylic panels
- Stainless steel residual box included
- Heavy base with provision for base bolting if needed
- Approximate weight: 16kg
- Dimension: H1620/W400/D400mm
- Graphite grey finishing

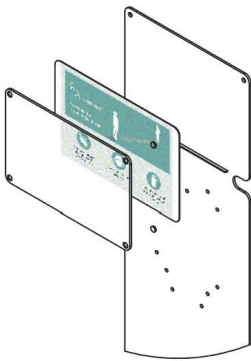
REF. 388 105
JVD SANITIZER
STATION

1.

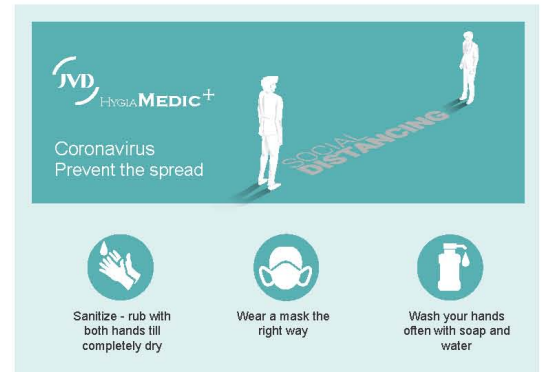


Screw holes provision made for Amethyr and Saphir

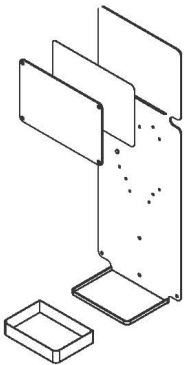
2.



High visibility and provide timely reminder to exercise preventive measures

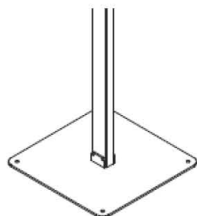
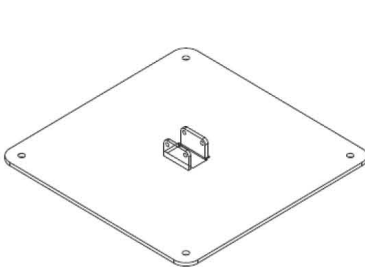


3.



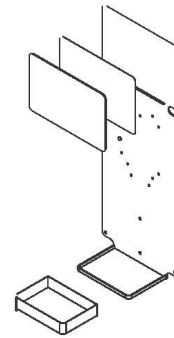
Complete with a residual box for easy cleaning

4.

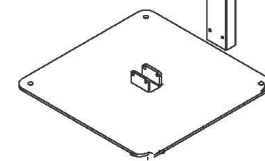


Strong support and easy assembly

5.



Unit will be shipped via SKD form; 3 parts



HARLE
PHILIPPINES
An ISO 9001:2015 Certified Company



Unit 408 SEDCCO Building, Rada corner Legazpi Streets, Legazpi Village, Makati City
Tel. Nos.: (632) 8-892-8989 / (632) 8-553-8988 * Fax No.: (632) 8-892-1688
E-Mail: sales@harlephils.com * Website: www.harlephils.com