

**INTEGRATED  
DISPLAY AREA**  
High visibility  
(A5 format)

**NON-CAPTIVE**  
Suitable for all  
types of hand  
sanitizer gel

**ANTI-VANDALISM**  
Stand-a-lone stable system  
(provision for base bolting)

**FOR AN EFFICIENT  
HANDS DISINFECTION!**

**SECURE**  
Lock with a key

**HYGIENIC**  
Automatic hand detection  
with residual collector

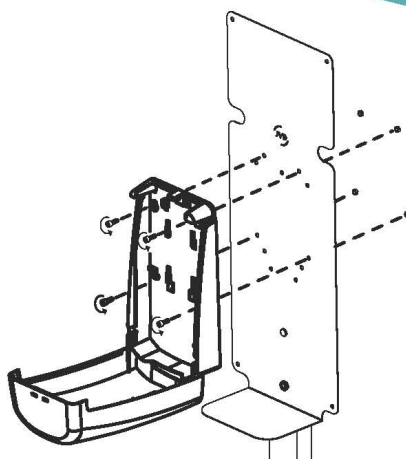
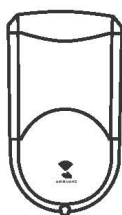
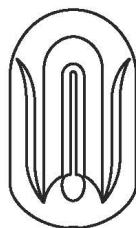
**NO ELECTRICAL  
INSTALLATION**  
The hand sanitizing  
station runs on batteries

#### SPECIFICATIONS

- Integrated sanitizer station
- High visibility notification panel
- Notification secured with magnetic acrylic panels
- Stainless steel residual box included
- Heavy base with provision for base bolting if needed
- Approximate weight: 16kg
- Dimension: H1620/W400/D400mm
- Graphite grey finishing

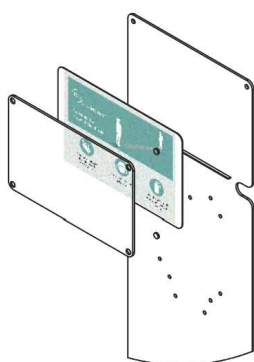
**REF. 388 105**  
JVD SANITIZER  
STATION

1.

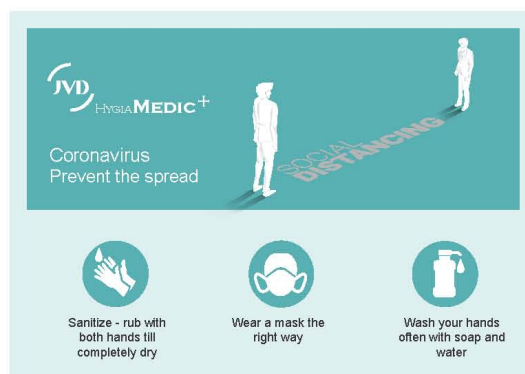


Screw holes provision made for Amethyr and Saphir

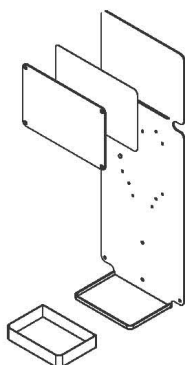
2.



High visibility and provide timely reminder to exercise preventive measures

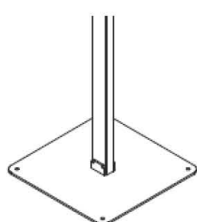
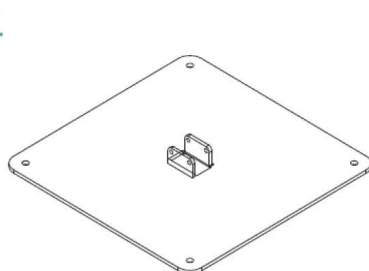


3.



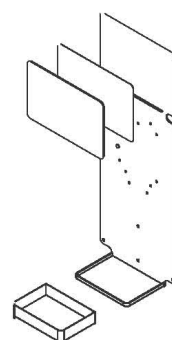
Complete with a residual box for easy cleaning

4.

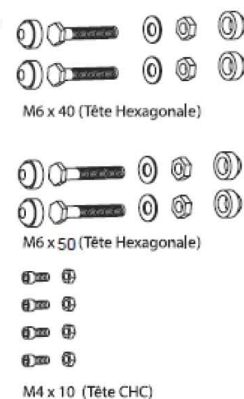


Strong support and easy assembly

5.



Unit will be shipped via SKD form; 3 parts





**REF: 844 397**  
SAPHIR Automatic  
Soap/Gel/Alcohol Dispenser  
UPC 12



Suitable to dispense Soap,  
Gel and Alcohol



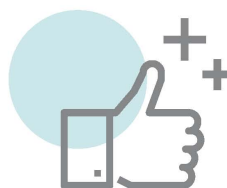
Automatic soap/gel/alcohol  
dispenser



Lockable with key



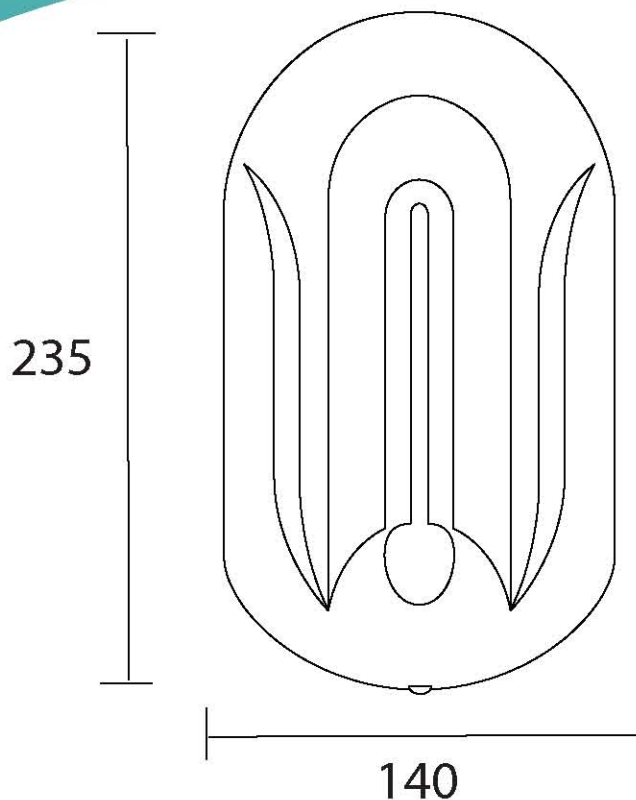
Runs on 4 X AA  
batteries



ABS and PS plastic  
housing



Transparent level viewer  
enables refilling at the right  
time



### SPECIFICATIONS

Capacity [ml]	1100
Material	ABS & PS plastic housing
Unit flow	1ml/dose every 3 secs
Viewer	Transparent level viewer
Lockable	Lockable with key
Power	04 x Alkaline AA batteries

### DIMENSIONS

Height [mm]	235
Length [mm]	140
Depth [mm]	107